

BS ISO 16237:2015



BSI Standards Publication

**Mechanical joining —  
Destructive testing of joints  
— Specimen dimensions and  
test procedure for cross-tension  
testing of single joints**

**bsi.**

...making excellence a habit.™

**National foreword**

This British Standard is the UK implementation of ISO 16237:2015.

The UK participation in its preparation was entrusted to Technical Committee WEE/29, Resistance welding.

A list of organizations represented on this committee can be obtained on request to its secretary.

This publication does not purport to include all the necessary provisions of a contract. Users are responsible for its correct application.

© The British Standards Institution 2015. Published by BSI Standards Limited 2015

ISBN 978 0 580 79724 8

ICS 25.160.40

**Compliance with a British Standard cannot confer immunity from legal obligations.**

This British Standard was published under the authority of the Standards Policy and Strategy Committee on 30 April 2015.

**Amendments issued since publication**

Date	Text affected
------	---------------

Licensed copy Imperial College, Imperial College London, Version correct as of 02/03/2016

# INTERNATIONAL STANDARD

**ISO**  
**16237**

First edition  
2015-05-01

---

---

## **Mechanical joining — Destructive testing of joints — Specimen dimensions and test procedure for cross-tension testing of single joints**

*Assemblage mécanique — Essais destructifs des soudures —  
Dimensions des éprouvettes et mode opératoire d'essai de traction sur  
éprouvettes en croix*



Reference number  
ISO 16237:2015(E)

© ISO 2015



## **COPYRIGHT PROTECTED DOCUMENT**

© ISO 2015

All rights reserved. Unless otherwise specified, no part of this publication may be reproduced or utilized otherwise in any form or by any means, electronic or mechanical, including photocopying, or posting on the internet or an intranet, without prior written permission. Permission can be requested from either ISO at the address below or ISO's member body in the country of the requester.

ISO copyright office  
Case postale 56 • CH-1211 Geneva 20  
Tel. + 41 22 749 01 11  
Fax + 41 22 749 09 47  
E-mail [copyright@iso.org](mailto:copyright@iso.org)  
Web [www.iso.org](http://www.iso.org)

Published in Switzerland

# Contents

Page

<b>Foreword</b> .....	<b>iv</b>
<b>Introduction</b> .....	<b>v</b>
<b>1 Scope</b> .....	<b>1</b>
<b>2 Normative references</b> .....	<b>1</b>
<b>3 Terms and definitions</b> .....	<b>1</b>
<b>4 Test specimens and types of tests</b> .....	<b>2</b>
<b>5 Test equipment and test procedure</b> .....	<b>3</b>
<b>6 Failure mode</b> .....	<b>4</b>
<b>7 Test report</b> .....	<b>5</b>
<b>Annex A (normative) Types of joint failure</b> .....	<b>6</b>
<b>Bibliography</b> .....	<b>12</b>

## Foreword

ISO (the International Organization for Standardization) is a worldwide federation of national standards bodies (ISO member bodies). The work of preparing International Standards is normally carried out through ISO technical committees. Each member body interested in a subject for which a technical committee has been established has the right to be represented on that committee. International organizations, governmental and non-governmental, in liaison with ISO, also take part in the work. ISO collaborates closely with the International Electrotechnical Commission (IEC) on all matters of electrotechnical standardization.

The procedures used to develop this document and those intended for its further maintenance are described in the ISO/IEC Directives, Part 1. In particular the different approval criteria needed for the different types of ISO documents should be noted. This document was drafted in accordance with the editorial rules of the ISO/IEC Directives, Part 2 (see [www.iso.org/directives](http://www.iso.org/directives)).

Attention is drawn to the possibility that some of the elements of this document may be the subject of patent rights. ISO shall not be held responsible for identifying any or all such patent rights. Details of any patent rights identified during the development of the document will be in the Introduction and/or on the ISO list of patent declarations received (see [www.iso.org/patents](http://www.iso.org/patents)).

Any trade name used in this document is information given for the convenience of users and does not constitute an endorsement.

For an explanation on the meaning of ISO specific terms and expressions related to conformity assessment, as well as information about ISO's adherence to the WTO principles in the Technical Barriers to Trade (TBT), see the following URL: [Foreword — Supplementary information](#).

The committee responsible for this document is ISO/TC 44, *Welding and allied processes*, Subcommittee SC 6, *Resistance welding and allied mechanical joining*.

## Introduction

This International standard specifies the testing procedure and the specimen shapes for cross-tension testing of mechanical joints. Items to be reported after testing are the cross tension strength as well as the fracture modes, which are given as drawings as the type of joint failure. The International Standard also includes normative references, terms and definitions and an example for a test report.



# Mechanical joining — Destructive testing of joints — Specimen dimensions and test procedure for cross-tension testing of single joints

## 1 Scope

This International Standard specifies the geometry of the test specimens and the method for the cross-tension testing of single mechanical joints on single-lap test specimens up to a single sheet thickness of 4,5 mm.

The term “sheet”, as used in this International Standard, includes extrusions and cast materials.

The purpose of the cross-tension test is to determine the mechanical characteristics and the failure types of the joints made with different joining methods.

This International Standard does not apply to civil engineering applications such as metal building and steel construction which are covered by other applicable standards.

## 2 Normative references

The following documents, in whole or in part, are normatively referenced in this document and are indispensable for its application. For dated references, only the edition cited applies. For undated references, the latest edition of the referenced document (including any amendments) applies.

ISO 2768-1, *General tolerances — Part 1: Tolerances for linear and angular dimensions without individual tolerance indications*

ISO 7500-1, *Metallic materials — Verification of static uniaxial testing machines — Part 1: Tension/compression testing machines — Verification and calibration of the force-measuring system*

## 3 Terms and definitions

For the purposes of this document, the following terms and definitions apply.

### 3.1

#### cross-tension strength

##### CTS

$F_{\max}$

maximum force, recorded in the test

### 3.2

#### cross-tension force

$F$

force, recorded in the test

### 3.3

#### crosshead displacement

$s$

displacement of the crosshead of the test equipment during the cross-tension test

### 3.4

#### crosshead displacement at maximum force

$s_{F_{\max}}$

displacement at which the maximum force  $F_{\max}$  is recorded

3.5  
crosshead displacement at 0,3  $F_{\max}$

$s_{0,3F_{\max}}$   
displacement at which 0,3 $F_{\max}$  is recorded after the peak value is achieved

3.6  
crosshead displacement at fracture

$s_{\text{fracture}}$   
displacement at which fracture occurs

4 Test specimens and types of tests

The configuration and dimensions are shown in [Figure 1](#) and [Table 1](#).

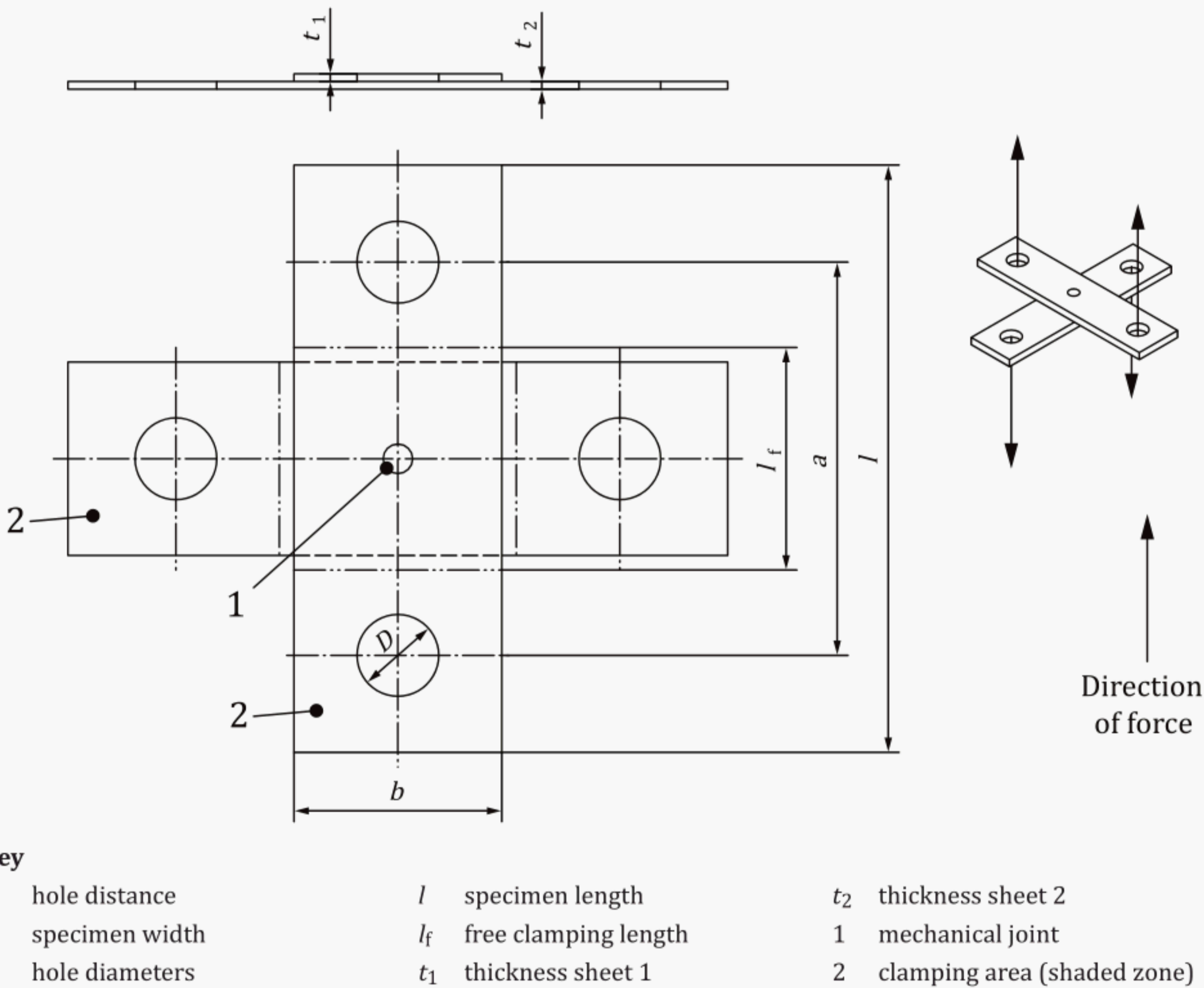


Figure 1 — Cross-tension specimen

**Table 1 — Dimensions of specimen (tolerances according to ISO 2768-1)**

Specimen width	$b$	$50^{+1}_0$ mm
Specimen length	$l$	$150^{+0}_{-0,5}$ mm
Hole distance	$a$	$(100 \pm 0,2)$ mm
Hole diameters <sup>a</sup>	$D$	$20^{+0,7}_0$ mm
Free clamping length	$l_f$	$54^{+0}_{-1}$ mm
<sup>a</sup> Holes may not be necessary depending on the clamping device used.		

## 5 Test equipment and test procedure

Testing is performed on a tensile testing machine, which satisfies the requirements given in ISO 7500-1. The cross-tension force and the displacement shall be simultaneously measured during testing. All tests shall be carried out at room temperature until the joint fails.

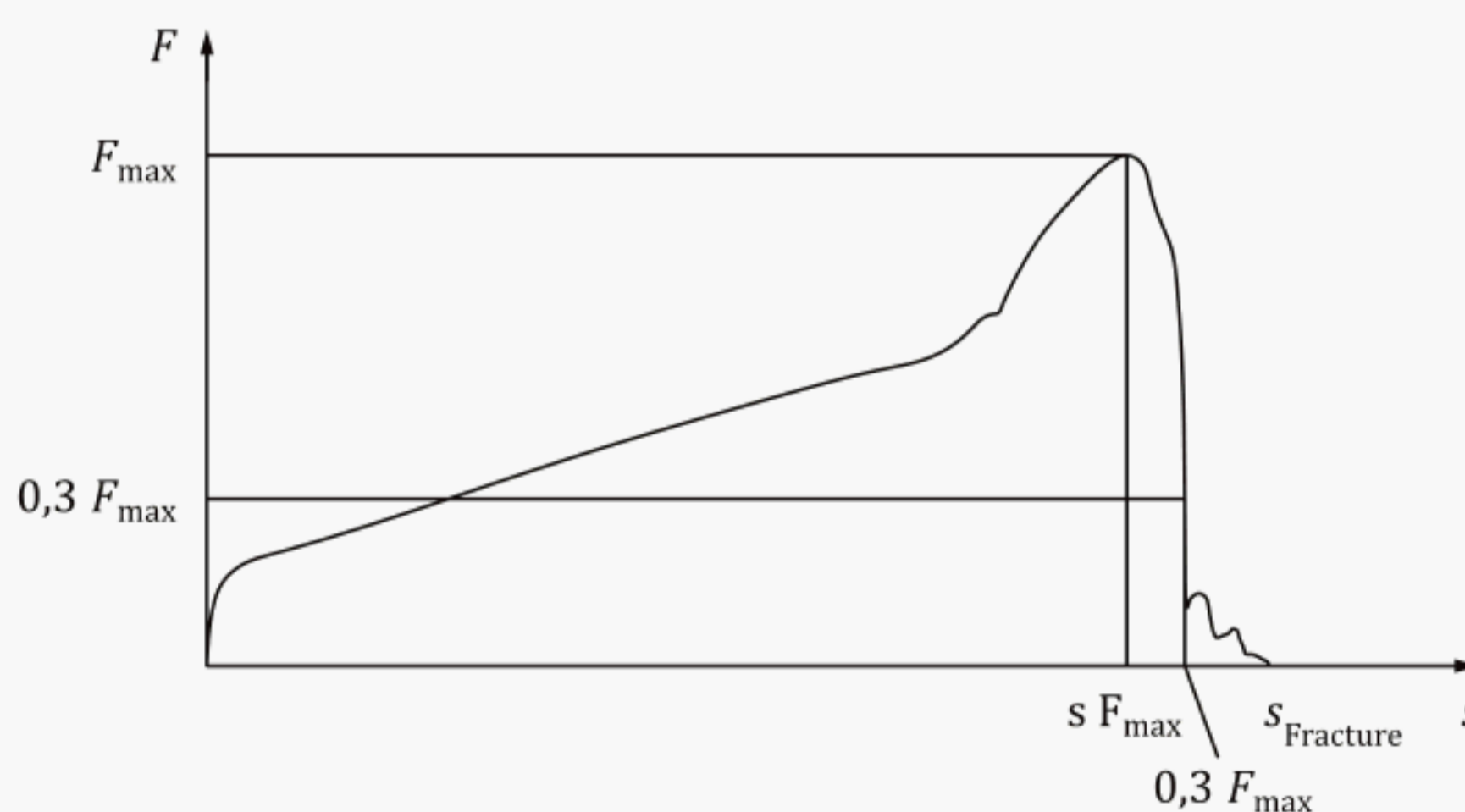
If a special clamping device is used, the shape and size shall be specified and recorded.

Crosshead separation rate of testing shall be (less than or) equal to 10 mm/min, and shall be kept constant during the test.

The specimen deformation shall be measured as the displacement of the crosshead or by using appropriate displacement sensing equipment either directly from the specimen or indirectly from the crosshead position. When using signals from the cross head position, the signal should be corrected by the stiffness of the testing machine in question. Results of measurements can only be compared when the tests are performed under identical conditions. The type of measurement and the initial length shall be noted in the test protocol.

The signals for force and specimen deformation during test shall be recorded as shown in [Figure 2](#) so that each specific value shall be recorded in the test report.

NOTE 1 If required, further characteristic data, e.g.  $0,3 F_{\max}$ , can be determined according to the cross-tension diagram given in [Figure 2](#).



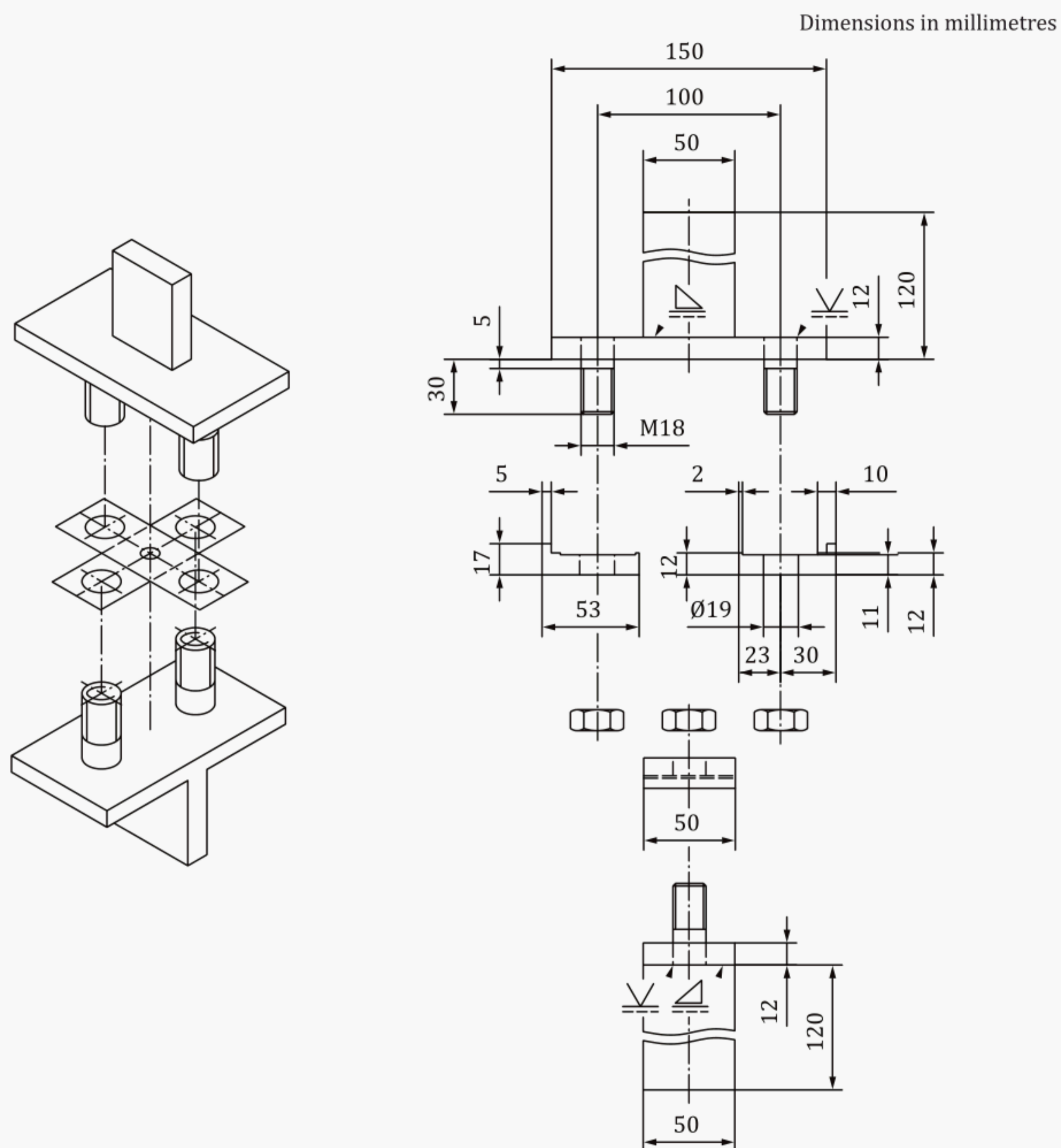
### Key

$F$  force

$s$  displacement

**Figure 2 — Characteristic values of a force-displacement diagram for the cross-tension test**

An example of a jig as shown in [Figure 3](#) can be used for the cross-tension testing of flat specimens.



**Figure 3 — Example of testing clamp**

NOTE 2 It is important that no slippage occurs between the specimen and the clamping device during the test.

## 6 Failure mode

The failure mode after cross-tension testing shall be classified according to [Annex A](#).

## 7 Test report

The test report shall contain at least the following information:

- a) a reference to this International Standard, i.e. ISO 16237:2015;
- b) name of the examiner and/or the examining body;
- c) date and signature of the examiner and/or the examining body;
- d) joining process and description of fasteners used;
- e) joining parameters, type of joining equipment, and material designation and dimensions of auxiliary materials;
- f) material designation of the joined parts or test specimen;
- g) specimen dimensions (including sheet thicknesses  $t_1$  and  $t_2$ );
- h) joining direction, stacking order, location of coated sides;
- i) type of testing equipment and settings;
- j) method of displacement measurement;
- k) individual, mean and standard deviations of the characteristic values, e.g. force, displacement, yield strength;
- l) diagram force-displacement path;
- m) failure mode;
- n) deviations from this International Standard.

## Annex A (normative)

### Types of joint failure

#### A.1 General

Depending on the joining technology, different types of failure can occur. Some of these are specific to the joining technology employed and should be recorded in the test protocol. Typical failure modes for different joints are shown, by way of example, in [Figures A.1](#) to [A.7](#).

In addition to the failure modes shown below, non-permissible sheet separation or deformation can be defined as a failure criterion by the contracting parties.

#### A.2 Typical failure modes of semi-tubular self-piercing rivet joints under cross-tension load

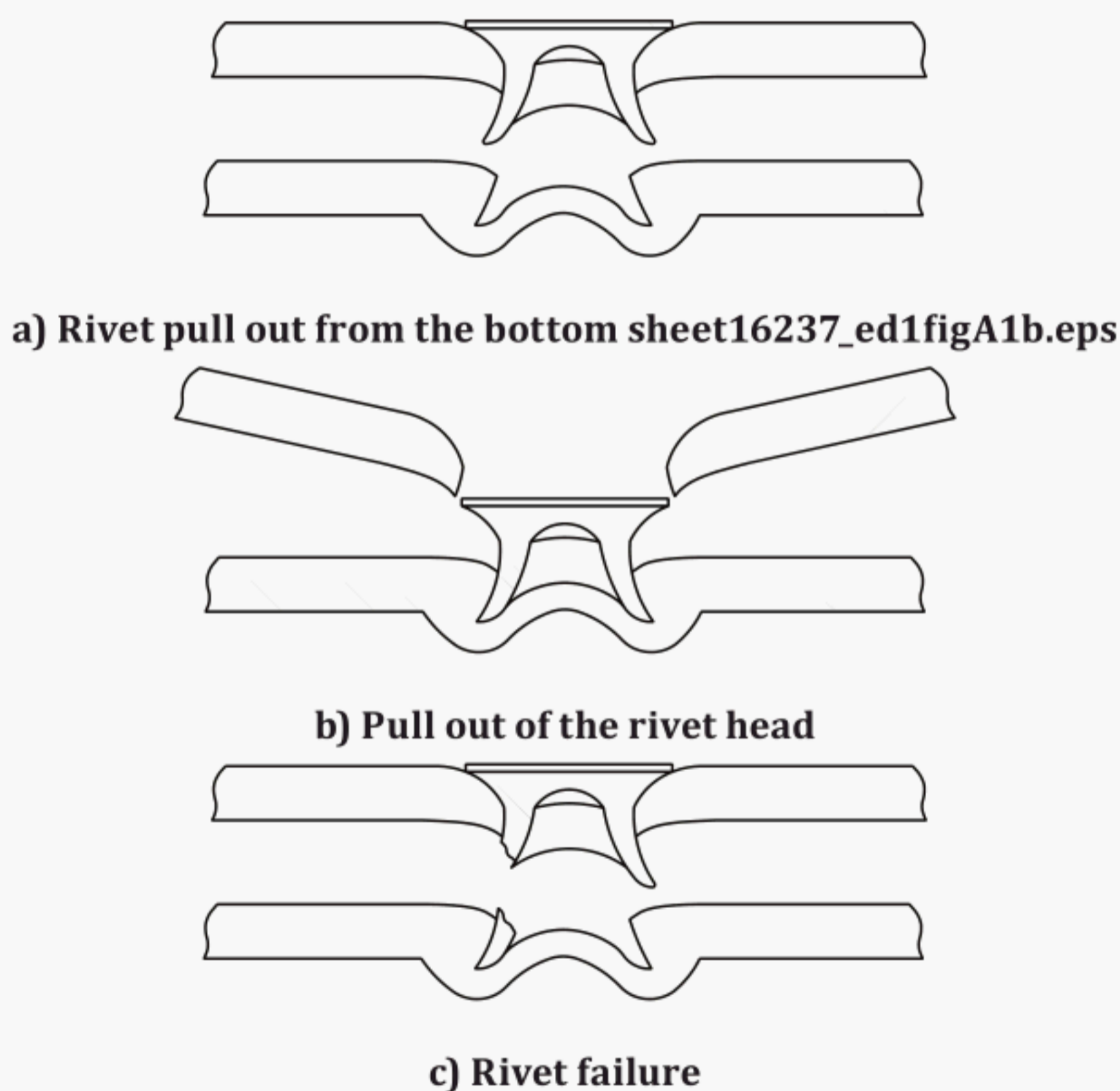


Figure A.1 — Typical failure modes of semi-tubular self-piercing rivet joints under cross-tension load

### A.3 Typical failure modes of solid self-piercing rivet joints under cross-tension load

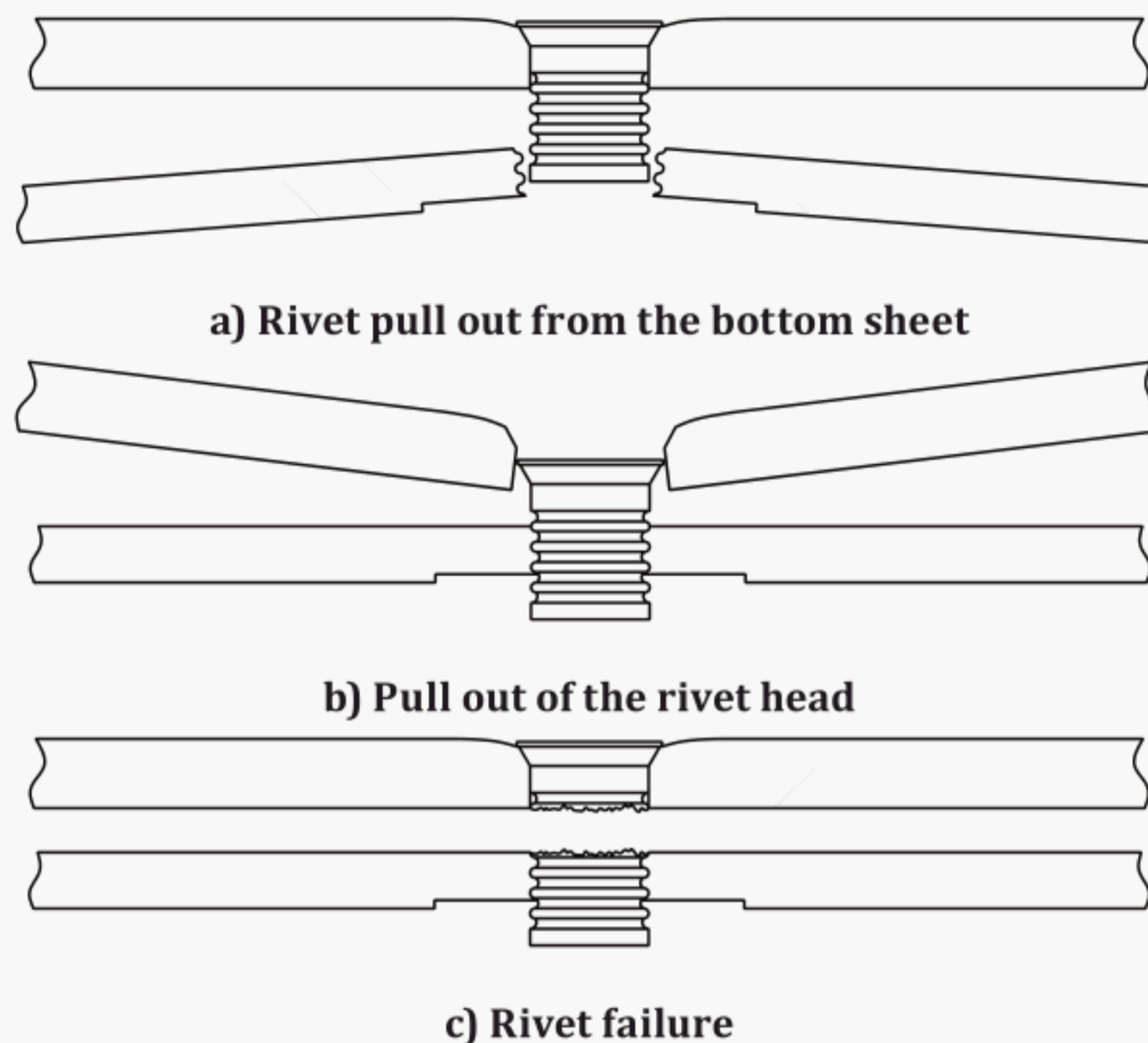
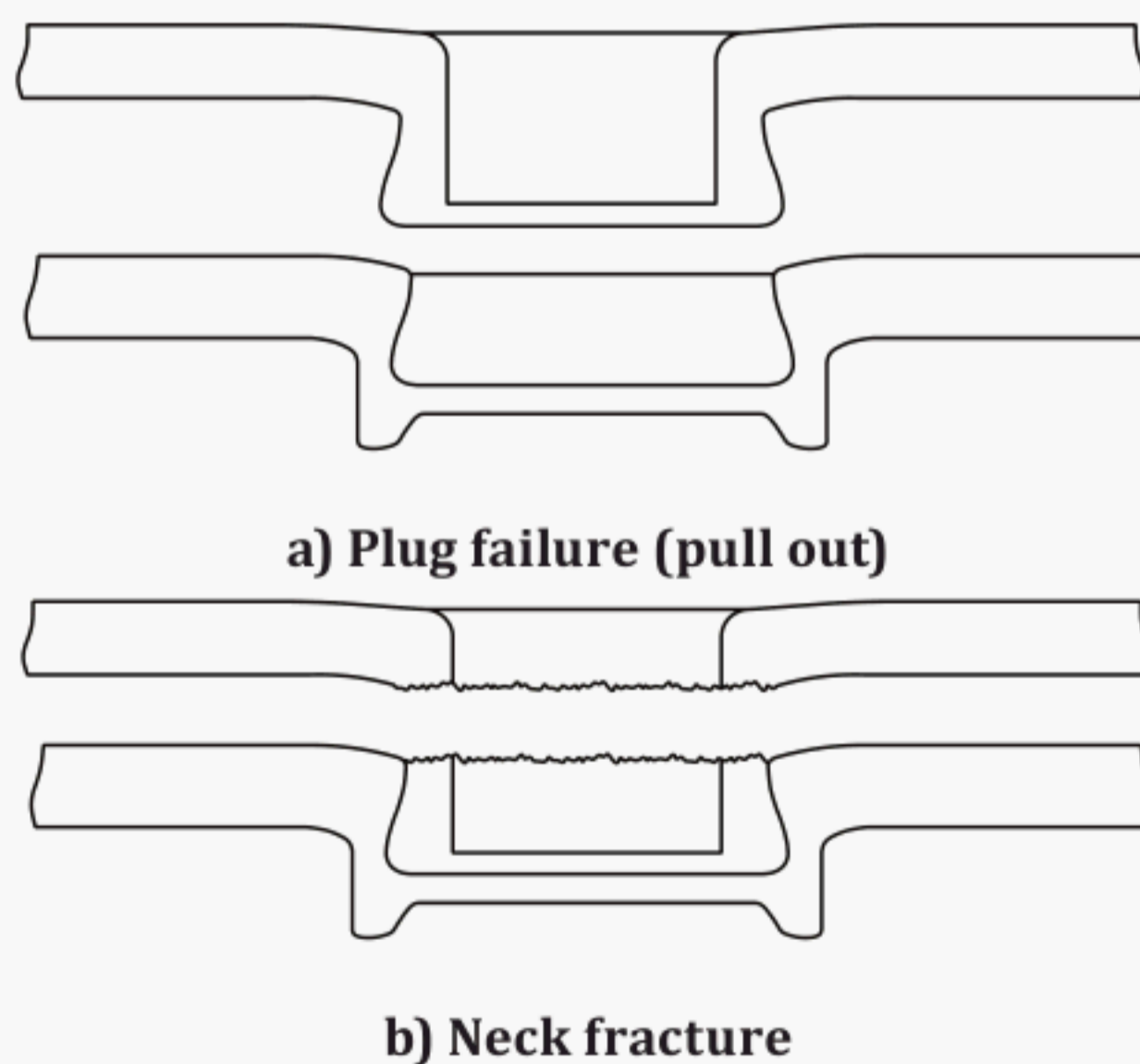
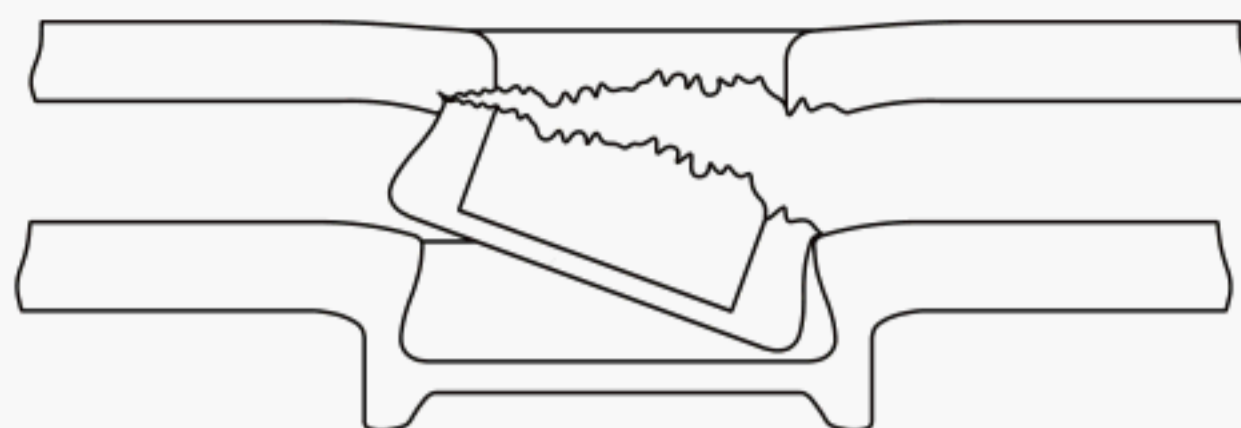


Figure A.2 — Typical failure modes of solid self-piercing rivet joints under cross-tension load

### A.4 Typical failure modes of clinch joints under cross-tension load

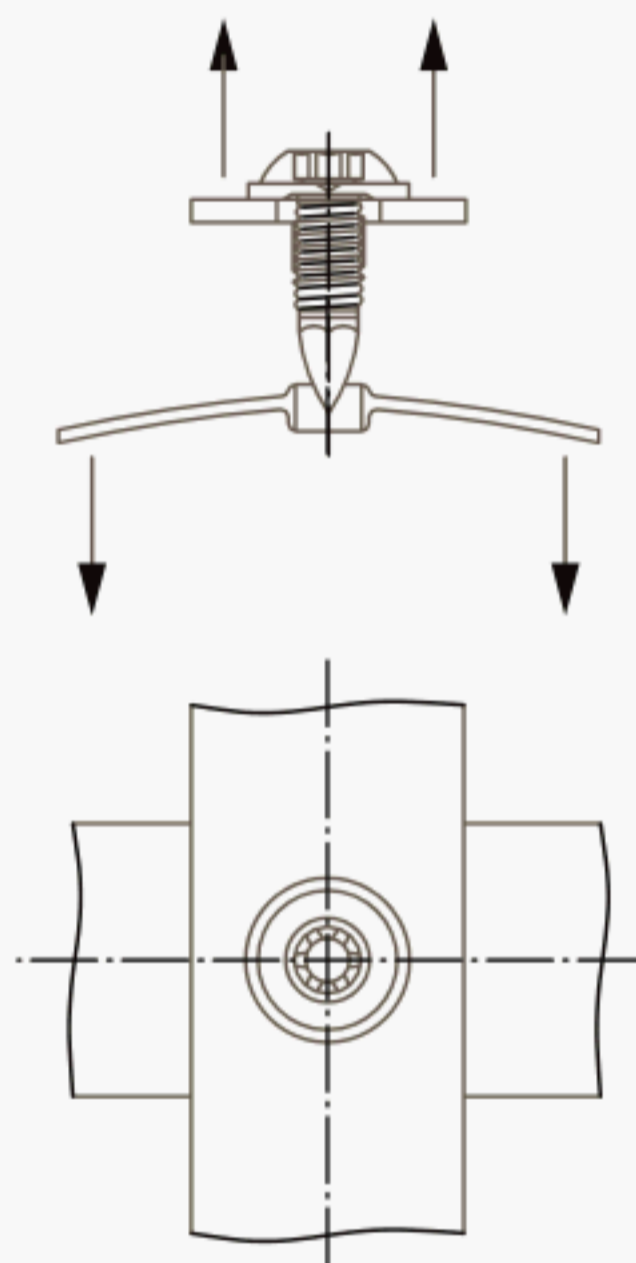




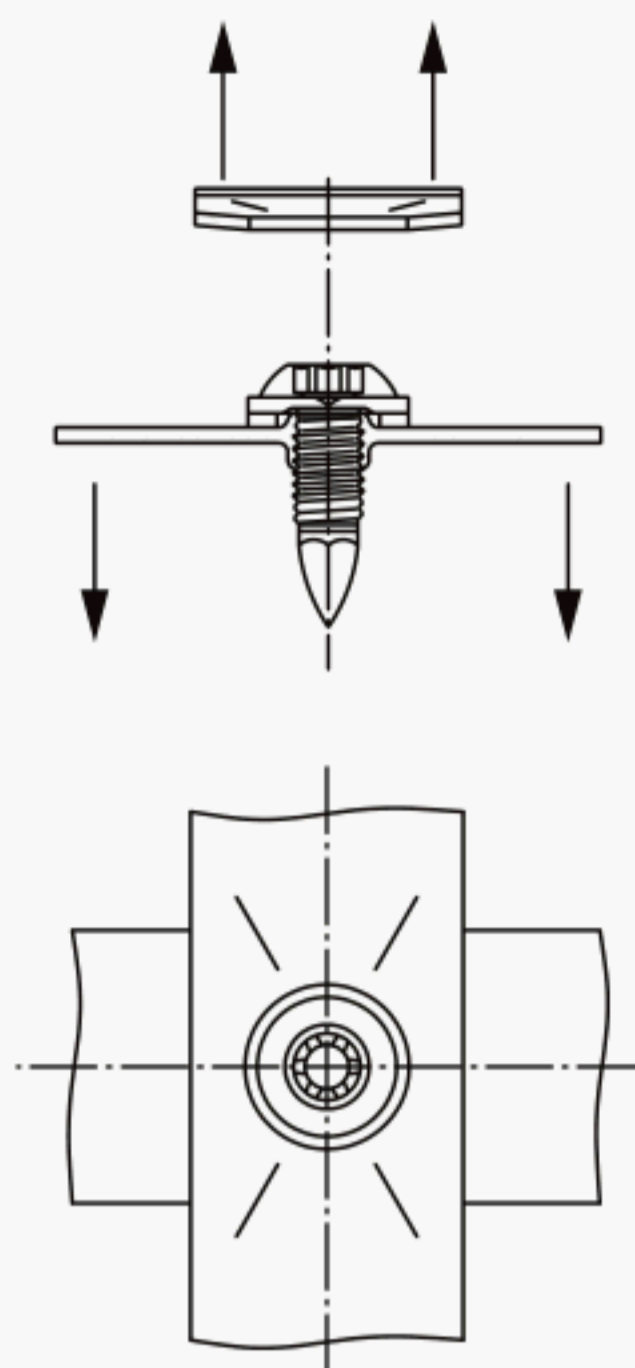
**c) Neck fracture with plastic deformation (mixed mode failure)**

**Figure A.3 — Typical failure modes of clinch joints under cross-tension load**

## **A.5 Typical failure modes of screwed joints under cross-tension load**



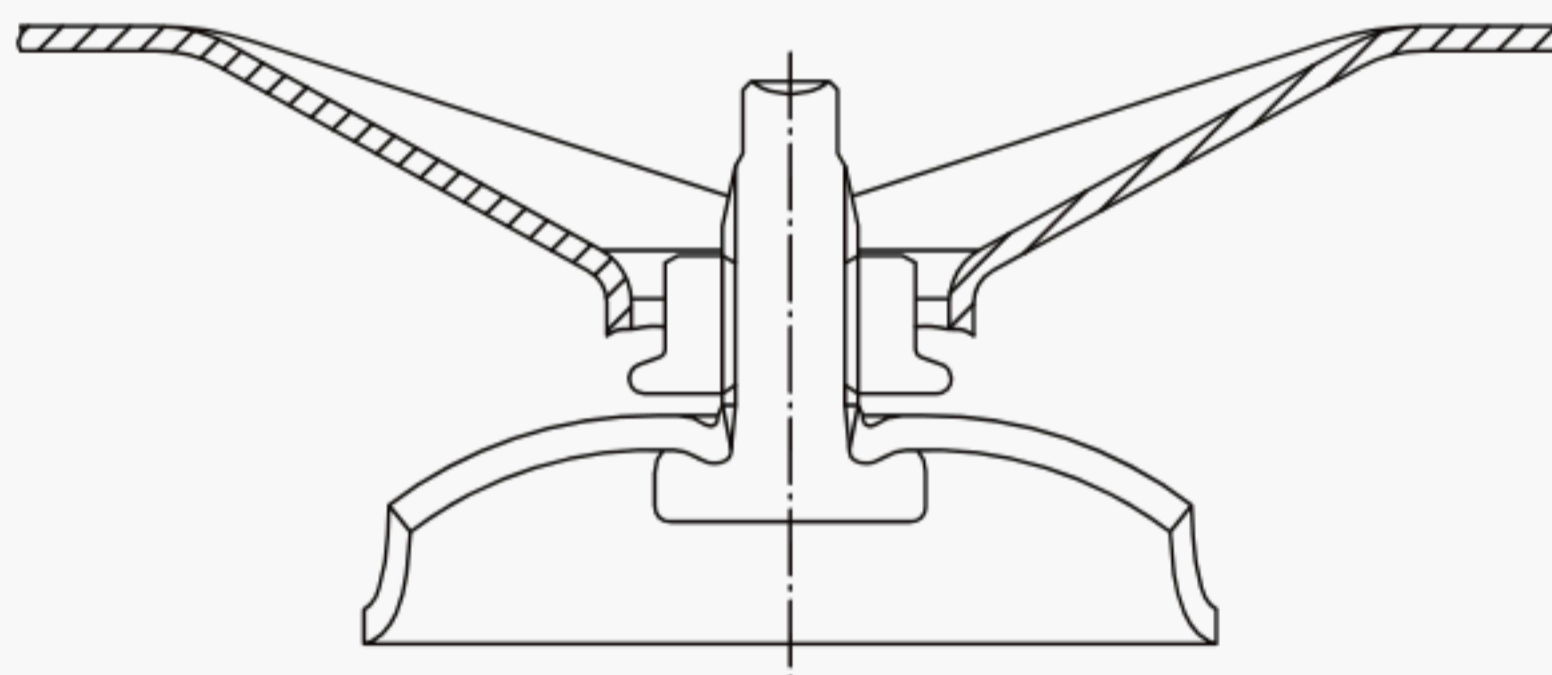
**a) Thread in specimen stripped**



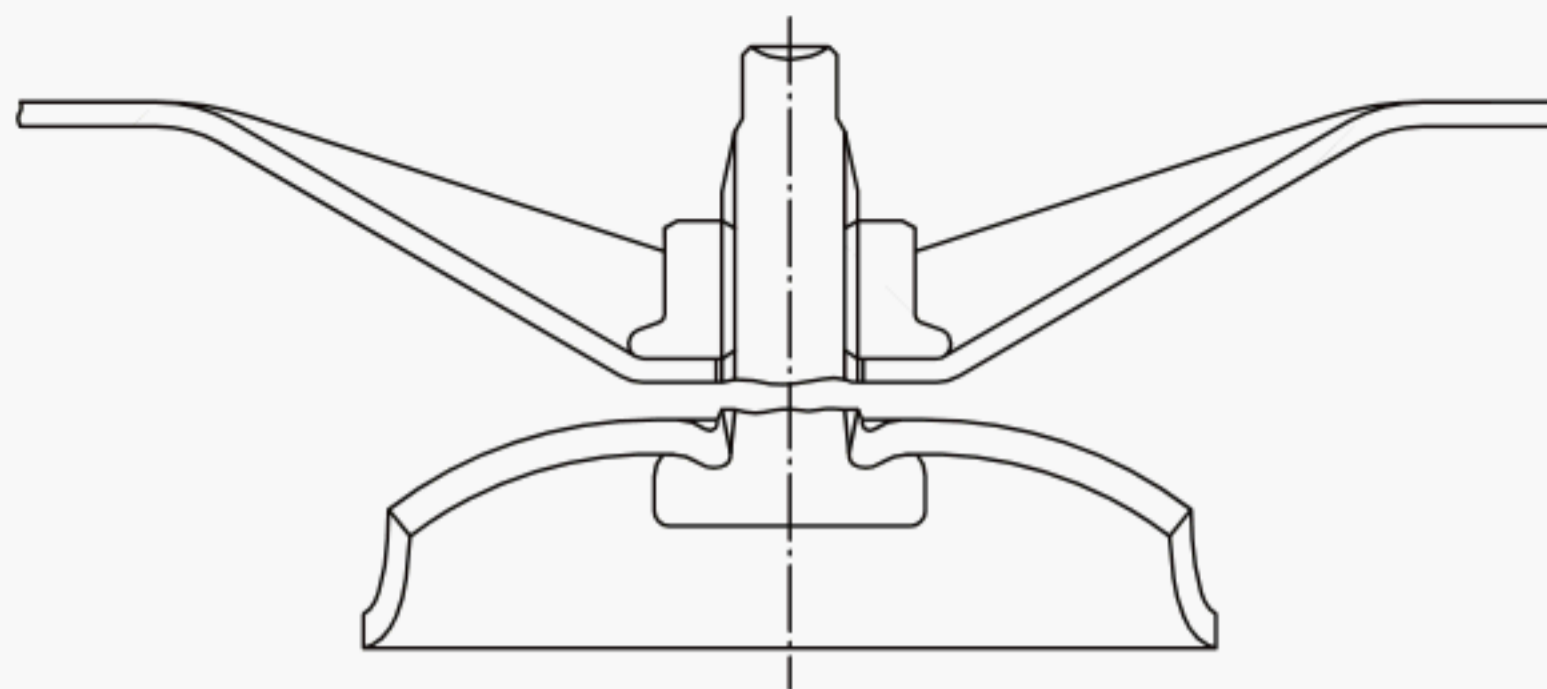
**b) Clamped part fails**

**Figure A.4 — Examples of failure modes of screwed joints under cross-tension load**

#### **A.6 Typical failure modes of joints made with self-clinching or self-piercing bolts under cross-tension load**



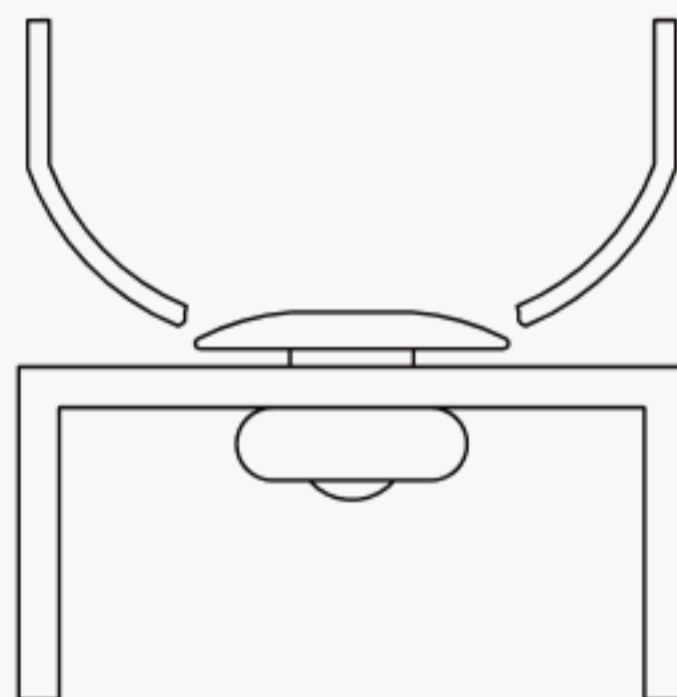
**a) Failure by hole tearing out in the weaker sheet (or component)**



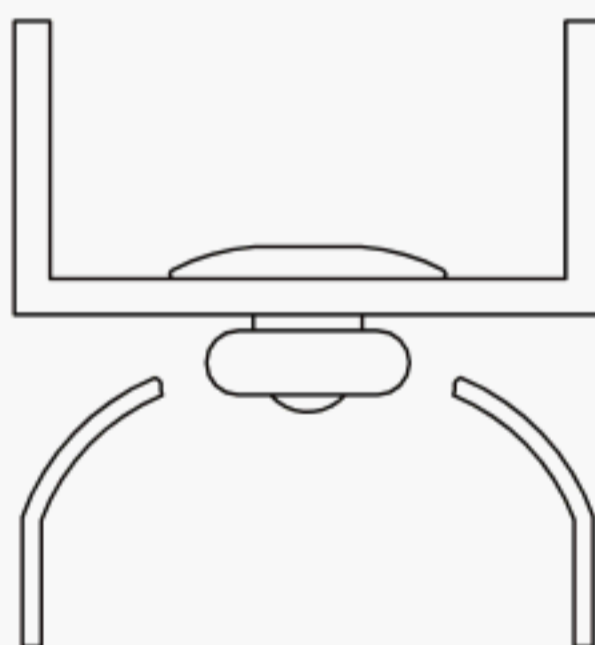
**b) Failure due to fracture of bolt shank**

**Figure A.5 — Typical failure modes of joints made with self-clinching or self-piercing nuts and bolts under cross-tension load**

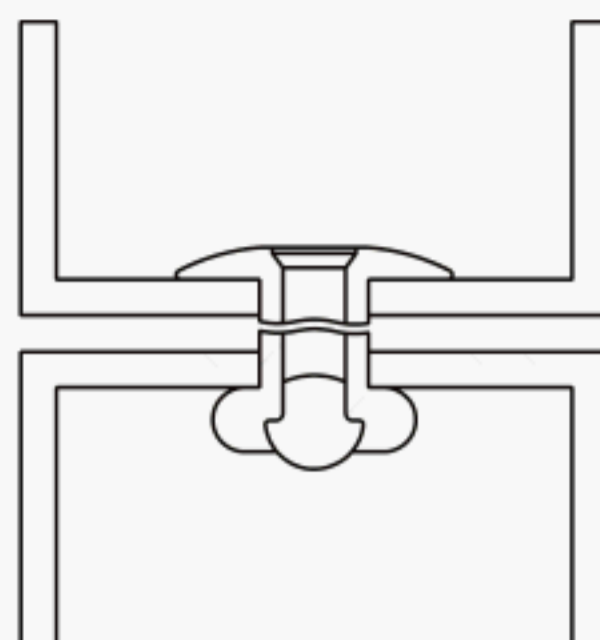
#### **A.7 Typical failure modes of blind rivet joints under cross-tension load**



**a) Case 1: Pull out of the blind rivet head**



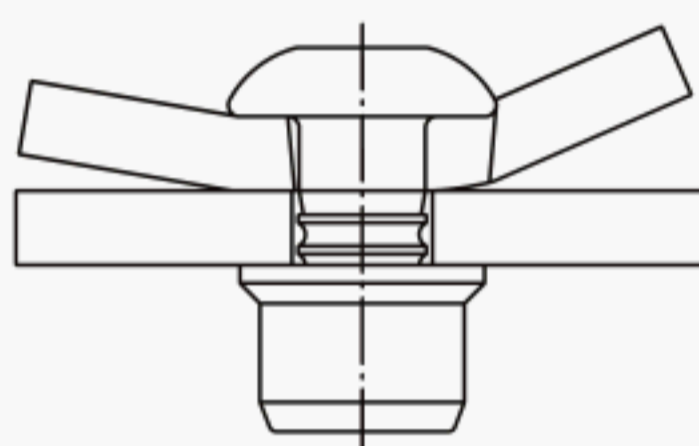
**b) Case 2: Blind rivet pull out from the bottom sheet**



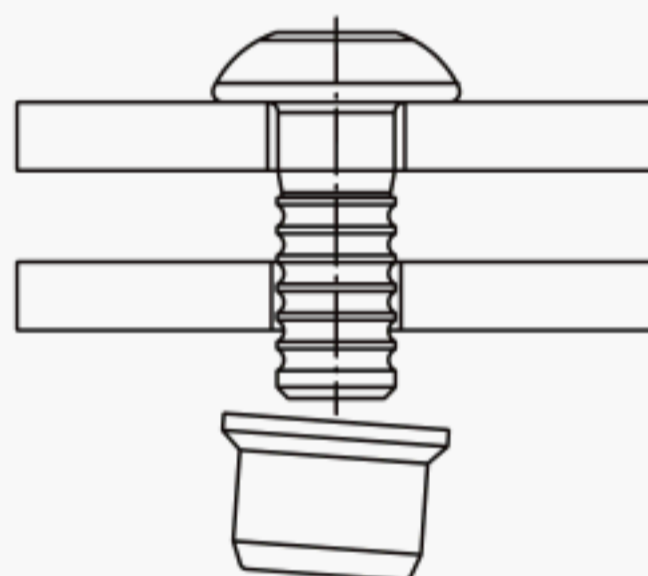
c) Case 3: Failure of the blind rivet

Figure A.6 — Typical failure modes of blind rivet joints under cross-tension load

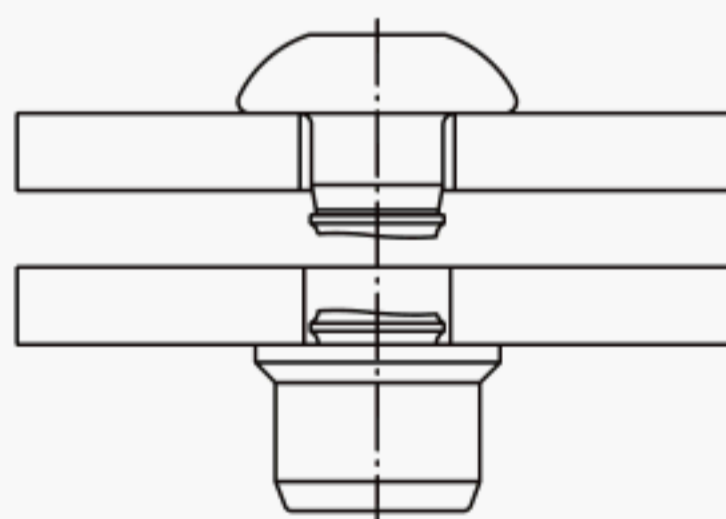
## A.8 Typical failure modes of lock bolt joints under cross-tension load



a) Case 1: Pull out of the lock bolt head



b) Case 2: Lock bolt collar loosening



c) Case 3: Lock bolt failure

Figure A.7 — Typical failure modes of lock bolt joints under cross-tension load

## Bibliography

- [1] ISO 14272, *Resistance welding — Destructive testing of welds — Specimen dimensions and procedure for cross tension testing of resistance spot and embossed projection welds*



---

---

**ICS 25.160.40**

Price based on 12 pages



# British Standards Institution (BSI)

BSI is the national body responsible for preparing British Standards and other standards-related publications, information and services.

BSI is incorporated by Royal Charter. British Standards and other standardization products are published by BSI Standards Limited.

## About us

We bring together business, industry, government, consumers, innovators and others to shape their combined experience and expertise into standards-based solutions.

The knowledge embodied in our standards has been carefully assembled in a dependable format and refined through our open consultation process. Organizations of all sizes and across all sectors choose standards to help them achieve their goals.

## Information on standards

We can provide you with the knowledge that your organization needs to succeed. Find out more about British Standards by visiting our website at [bsigroup.com/standards](http://bsigroup.com/standards) or contacting our Customer Services team or Knowledge Centre.

## Buying standards

You can buy and download PDF versions of BSI publications, including British and adopted European and international standards, through our website at [bsigroup.com/shop](http://bsigroup.com/shop), where hard copies can also be purchased.

If you need international and foreign standards from other Standards Development Organizations, hard copies can be ordered from our Customer Services team.

## Subscriptions

Our range of subscription services are designed to make using standards easier for you. For further information on our subscription products go to [bsigroup.com/subscriptions](http://bsigroup.com/subscriptions).

With **British Standards Online (BSOL)** you'll have instant access to over 55,000 British and adopted European and international standards from your desktop. It's available 24/7 and is refreshed daily so you'll always be up to date.

You can keep in touch with standards developments and receive substantial discounts on the purchase price of standards, both in single copy and subscription format, by becoming a **BSI Subscribing Member**.

**PLUS** is an updating service exclusive to BSI Subscribing Members. You will automatically receive the latest hard copy of your standards when they're revised or replaced.

To find out more about becoming a BSI Subscribing Member and the benefits of membership, please visit [bsigroup.com/shop](http://bsigroup.com/shop).

With a **Multi-User Network Licence (MUNL)** you are able to host standards publications on your intranet. Licences can cover as few or as many users as you wish. With updates supplied as soon as they're available, you can be sure your documentation is current. For further information, email [bsmusales@bsigroup.com](mailto:bsmusales@bsigroup.com).

## BSI Group Headquarters

389 Chiswick High Road London W4 4AL UK

## Revisions

Our British Standards and other publications are updated by amendment or revision.

We continually improve the quality of our products and services to benefit your business. If you find an inaccuracy or ambiguity within a British Standard or other BSI publication please inform the Knowledge Centre.

## Copyright

All the data, software and documentation set out in all British Standards and other BSI publications are the property of and copyrighted by BSI, or some person or entity that owns copyright in the information used (such as the international standardization bodies) and has formally licensed such information to BSI for commercial publication and use. Except as permitted under the Copyright, Designs and Patents Act 1988 no extract may be reproduced, stored in a retrieval system or transmitted in any form or by any means – electronic, photocopying, recording or otherwise – without prior written permission from BSI. Details and advice can be obtained from the Copyright & Licensing Department.

## Useful Contacts:

### Customer Services

**Tel:** +44 845 086 9001

**Email (orders):** [orders@bsigroup.com](mailto:orders@bsigroup.com)

**Email (enquiries):** [cservices@bsigroup.com](mailto:cservices@bsigroup.com)

### Subscriptions

**Tel:** +44 845 086 9001

**Email:** [subscriptions@bsigroup.com](mailto:subscriptions@bsigroup.com)

### Knowledge Centre

**Tel:** +44 20 8996 7004

**Email:** [knowledgecentre@bsigroup.com](mailto:knowledgecentre@bsigroup.com)

### Copyright & Licensing

**Tel:** +44 20 8996 7070

**Email:** [copyright@bsigroup.com](mailto:copyright@bsigroup.com)