



BSI Standards Publication

## Road vehicles — Fuse-links

---

Part 6: Single-bolt fuse-links

## National foreword

This British Standard is the UK implementation of [ISO 8820-6:2019](#). It supersedes [BS ISO 8820-6:2007](#), which is withdrawn.

The UK participation in its preparation was entrusted to Technical Committee AUE/32, Electrical and electronic components and general system aspects (Road vehicles).

A list of organizations represented on this committee can be obtained on request to its secretary.

This publication does not purport to include all the necessary provisions of a contract. Users are responsible for its correct application.

© The British Standards Institution 2019  
Published by BSI Standards Limited 2019

ISBN 978 0 580 95244 9

ICS 43.040.10

**Compliance with a British Standard cannot confer immunity from legal obligations.**

This British Standard was published under the authority of the Standards Policy and Strategy Committee on 28 February 2019.

### Amendments/corrigenda issued since publication

Date	Text affected
<hr/>	

# INTERNATIONAL STANDARD

**ISO**  
**8820-6**

Second edition  
2019-02-18

---

---

## Road vehicles — Fuse-links —

### Part 6: Single-bolt fuse-links

*Véhicules routiers — Liaisons fusibles —  
Partie 6: Liaisons fusibles à poste singulier*



Reference number  
ISO 8820-6:2019(E)

© ISO 2019



## **COPYRIGHT PROTECTED DOCUMENT**

© ISO 2019, Published in Switzerland

All rights reserved. Unless otherwise specified, no part of this publication may be reproduced or utilized otherwise in any form or by any means, electronic or mechanical, including photocopying, or posting on the internet or an intranet, without prior written permission. Permission can be requested from either ISO at the address below or ISO's member body in the country of the requester.

ISO copyright office  
Ch. de Blandonnet 8 • CP 401  
CH-1214 Vernier, Geneva, Switzerland  
Tel. +41 22 749 01 11  
Fax +41 22 749 09 47  
[copyright@iso.org](mailto:copyright@iso.org)  
[www.iso.org](http://www.iso.org)



**COPYRIGHT PROTECTED DOCUMENT**

© ISO 2019, Published in Switzerland

All rights reserved. Unless otherwise specified, no part of this publication may be reproduced or utilized otherwise in any form or by any means, electronic or mechanical, including photocopying, or posting on the internet or an intranet, without prior written permission. Permission can be requested from either ISO at the address below or ISO’s member body in the country of the requester.

ISO copyright office  
Ch. de Blandonnet 8 • CP 401  
CH-1214 Vernier, Geneva, Switzerland  
Tel. +41 22 749 01 11  
Fax +41 22 749 09 47  
[copyright@iso.org](mailto:copyright@iso.org)  
[www.iso.org](http://www.iso.org)



## Foreword

ISO (the International Organization for Standardization) is a worldwide federation of national standards bodies (ISO member bodies). The work of preparing International Standards is normally carried out through ISO technical committees. Each member body interested in a subject for which a technical committee has been established has the right to be represented on that committee. International organizations, governmental and non-governmental, in liaison with ISO, also take part in the work. ISO collaborates closely with the International Electrotechnical Commission (IEC) on all matters of electrotechnical standardization.

The procedures used to develop this document and those intended for its further maintenance are described in the ISO/IEC Directives, Part 1. In particular, the different approval criteria needed for the different types of ISO documents should be noted. This document was drafted in accordance with the editorial rules of the ISO/IEC Directives, Part 2 (see [www.iso.org/directives](http://www.iso.org/directives)).

Attention is drawn to the possibility that some of the elements of this document may be the subject of patent rights. ISO shall not be held responsible for identifying any or all such patent rights. Details of any patent rights identified during the development of the document will be in the Introduction and/or on the ISO list of patent declarations received (see [www.iso.org/patents](http://www.iso.org/patents)).

Any trade name used in this document is information given for the convenience of users and does not constitute an endorsement.

For an explanation of the voluntary nature of standards, the meaning of ISO specific terms and expressions related to conformity assessment, as well as information about ISO's adherence to the World Trade Organization (WTO) principles in the Technical Barriers to Trade (TBT) see [www.iso.org/iso/foreword.html](http://www.iso.org/iso/foreword.html).

This document was prepared by Technical Committee ISO/TC 22, *Road vehicles*, Subcommittee SC 32, *Electrical and electronic components and general system aspects*.

Any feedback or questions on this document should be directed to the user's national standards body. A complete listing of these bodies can be found at [www.iso.org/members.html](http://www.iso.org/members.html).

This second edition cancels and replaces the first edition ([ISO 8820-6:2007](http://www.iso.org/iso/8820-6:2007)) which has been technically revised.

The main changes compared to the previous edition are as follows:

- 30 A, 40 A and 225 A have been added;
- editorial changes have been made.

A list of all parts in the ISO 8820 series can be found on the ISO website.

This document is intended to be used in conjunction with [ISO 8820-1](http://www.iso.org/iso/8820-1) and with [8820-2](http://www.iso.org/iso/8820-2). The numbering of its clauses corresponds to that of [ISO 8820-1](http://www.iso.org/iso/8820-1) whose requirements are applicable, except where modified by requirements particular to this document.



# Road vehicles — Fuse-links —

## Part 6: Single-bolt fuse-links

### 1 Scope

This document specifies single-bolt fuse-links in road vehicles. It establishes, for this fuse-link type, the rated current, test procedures, performance requirements and dimensions.

This document is applicable to those fuse-links with a rated voltage of 58 V, a current rating of  $\leq 300$  A and a breaking capacity of 2 000 A, intended for use in road vehicles at a nominal voltage of 12 V, 24 V and/or 48 V.

### 2 Normative references

The following documents are referred to in the text in such a way that some or all of their content constitutes requirements of this document. For dated references, only the edition cited applies. For undated references, the latest edition of the referenced document (including any amendments) applies.

[ISO 8820-1](#), *Road vehicles — Fuse-links — Part 1: Definitions and general test requirements*

[ISO 6722-1](#), *Road vehicles — 60 V and 600 V single-core cables — Part 1: Dimensions, test methods and requirements for copper conductor cables*

[ISO 2768-1](#), *General tolerances — Part 1: Tolerances for linear and angular dimensions without individual tolerance indications*

[ISO 2768-2](#), *General tolerances — Part 2: Geometrical tolerances for features without individual tolerance indications*

### 3 Terms and definitions

For the purposes of this document, the terms and definitions given in [ISO 8820-1](#) and the following apply.

ISO and IEC maintain terminological databases for use in standardization at the following addresses:

- ISO Online browsing platform: available at <https://www.iso.org/obp>
- IEC Electropedia: available at <http://www.electropedia.org/>

#### 3.1

##### **insulating nut**

electrically insulated device used to assemble a single-bolt fuse

### 4 Marking and labelling

The requirements given in [ISO 8820-1](#) and [Table 1](#) of this document shall apply.

No.	Requirement/test		Clause	Sample groups <sup>a</sup>						
				1	2	3	4	5	6	7
6	Fluid compatibility		<a href="#">5.4</a>					X		
7	Mechanical load		<a href="#">5.4</a>						X	
8	Transient current cycling		<a href="#">5.3</a>							X
9	Voltage drop		<a href="#">5.2.</a>				X	X	X	X
10	Current step		<a href="#">5.6</a>			X				
11	Breaking capacity		<a href="#">5.7</a>	X						
12	Operating time rating	1,00 I <sub>N</sub>	<a href="#">5.5</a>		X		X	X	X	X
		1,35 I <sub>N</sub>			Y <sup>b</sup>		Y	Y	Y	Y
		1,50 I <sub>N</sub>			Y		Y	Y	Y	Y
		2,00 I <sub>N</sub>			Y		Y	Y	Y	Y
		3,50 I <sub>N</sub>			Y		Y	Y	Y	Y
		6,00 I <sub>N</sub>			Y		Y	Y	Y	Y
13	Strength of insulating body		<a href="#">5.9</a>	X	X	X	X	X	X	X
<sup>a</sup> Each sample group shall contain a minimum of 10 fuse links.										
<sup>b</sup> For these operating time tests (Y) the sample groups 2, 4, 5, 6 and 7 shall be divided equally. These fuses are intended to be subjected to a single operating time test only.										

5.1.3 Test cable sizes

Test cable sizes shall be as given in [Table 3](#). All tests for a particular fuse-link rating shall be performed using the same cable size.

Test cable sizes are specified to allow comparative fuse-link tests to be carried out. The cable size specified does not necessarily indicate the size of cable to be used in the vehicle application.

Table 3 — Test cable sizes

Fuse-link rating	Conductor cross-sectional area <sup>a</sup>
A	mm <sup>2</sup>
30	2,5
40	4
50	10
75	
100	16
125	
150	25
175	
200	35
225	50
250	
300	70
<sup>a</sup> Conductor material according <a href="#">ISO 6722-1</a> .	



5.2 Voltage drop

5.2.1 Tests

The test given in [ISO 8820-1](#) and [Figure 3](#) of this document shall apply.

5.2.2 Requirements

The requirements given in [Table 4](#) shall apply.

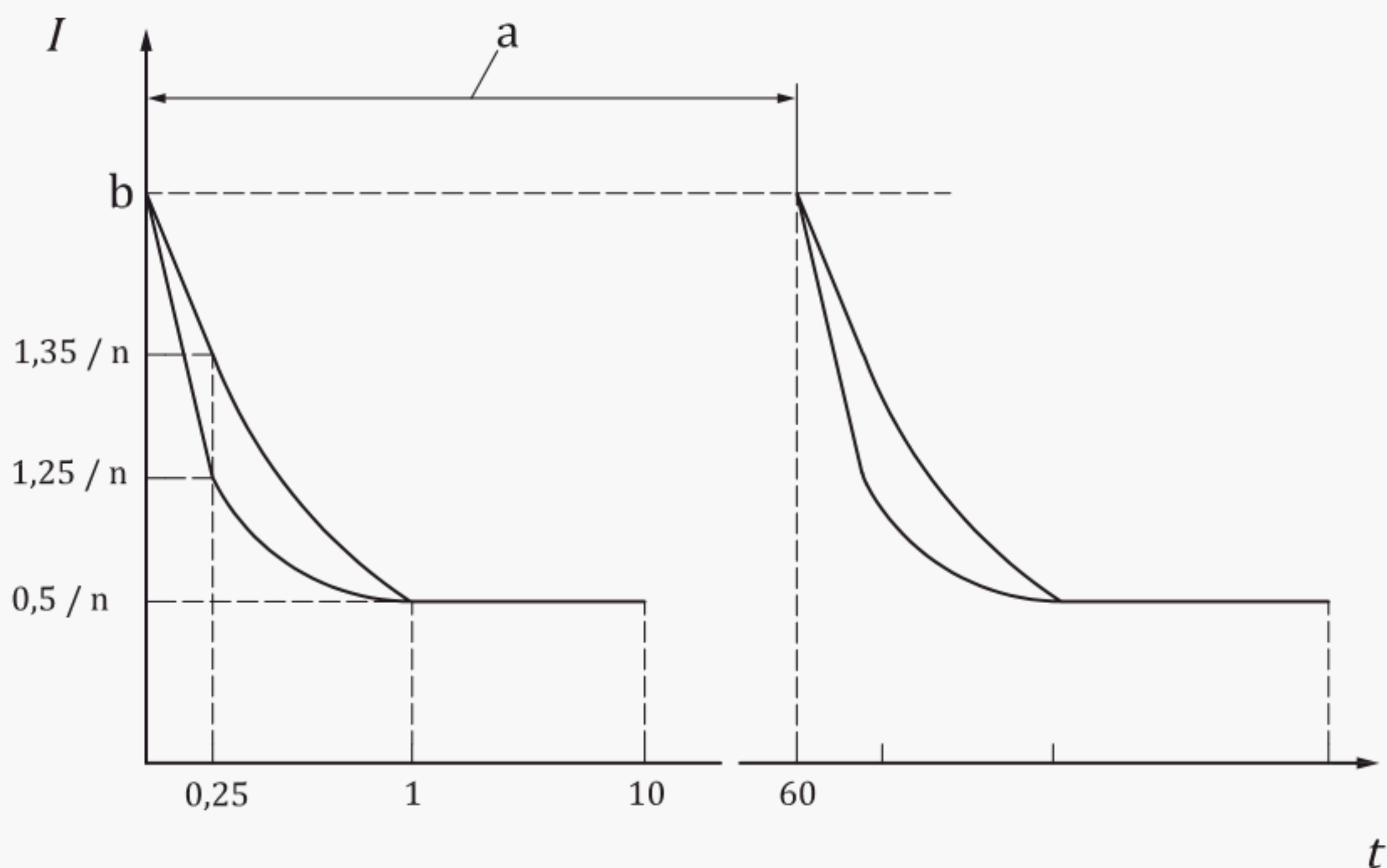
Table 4 — Voltage drop

Fuse rating A	Max. fuse-link voltage drop mV
30	120
40	115
50	110
75	105
100	100
125	95
150	90
175	85
200	80
225	
250	75
300	70

5.3 Transient current cycling

5.3.1 Test

[Figure 1](#) of this document and the test given in [ISO 8820-1](#) shall apply. This test shall be performed at an environmental temperature of  $(90 \pm 5) ^\circ\text{C}$ . At an elapsed time of 0,25 s on-time, the current shall fall to a value between  $1,25 I_n$  and  $1,35 I_n$ . At no time shall the steady state current fall below  $0,50 I_n$ .



**Key**

- $I$  current in A
- $t$  time in s
- a One cycle.
- b  $4 I_n$ .

**Figure 1 — Transient current cycling**

**5.3.2 Requirement**

The requirements given in [ISO 8820-1](#) shall apply.

**5.4 Environmental conditions**

The tests and requirements given in [ISO 8820-1](#) shall apply.

**5.5 Operating time rating**

**5.5.1 Test**

The test given in [ISO 8820-1](#) shall apply.

**5.5.2 Requirement**

The requirements given in [Table 5](#) shall apply

After activation, the current through the fuse-link shall not exceed 0,5 MA at the rated voltage of the fuse-link.

Table 5 — Operating times

Test current A	Operating time s	
	min.	max.
1,0 $I_n$	360 000	$\infty$
1,35 $I_n$	5	1 800
1,5 $I_n$	1	600
2,0 $I_n$	0,2	60
3,5 $I_n$	0,03	1,0
6,0 $I_n$	0,01	0,2

5.6 Current steps

5.6.1 Test

The test given in [ISO 8820-1](#) shall apply.

5.6.2 Requirement

The requirement given in [ISO 8820-1](#) shall apply. After activation, the current through the fuse-link shall not exceed 0,5 MA at the rated voltage of the fuse-link.

5.7 Breaking capacity

5.7.1 Test

The test given in [ISO 8820-1](#) shall apply.

Test at 2 000 A with cable sizes as shown in [Table 3](#).

5.7.2 Requirement

The requirement given in [ISO 8820-1](#) shall apply

After activation, the current through the fuse-link shall not exceed 0,5 MA at  $U_R = 58$  V.

5.8 Strength of terminals

Not applicable.

5.9 Strength of insulating body of the fuse-link and insulating nut

5.9.1 Purpose

This test evaluates the ability of the fuse link and insulating nut to withstand mechanical stress during assembly and removal.

5.9.2 Test

Install the fuse-links in the test fixture with the mounting torque of  $(12 \pm 1)$  Nm.

NOTE Test number 13 from [Table 2](#) "test sequence" is just a removal from the test fixture.



5.9.3 Requirement

Fuse-links and insulating nuts shall remain physically intact.

6 Dimensions

6.1 Single-bolt fuse-link

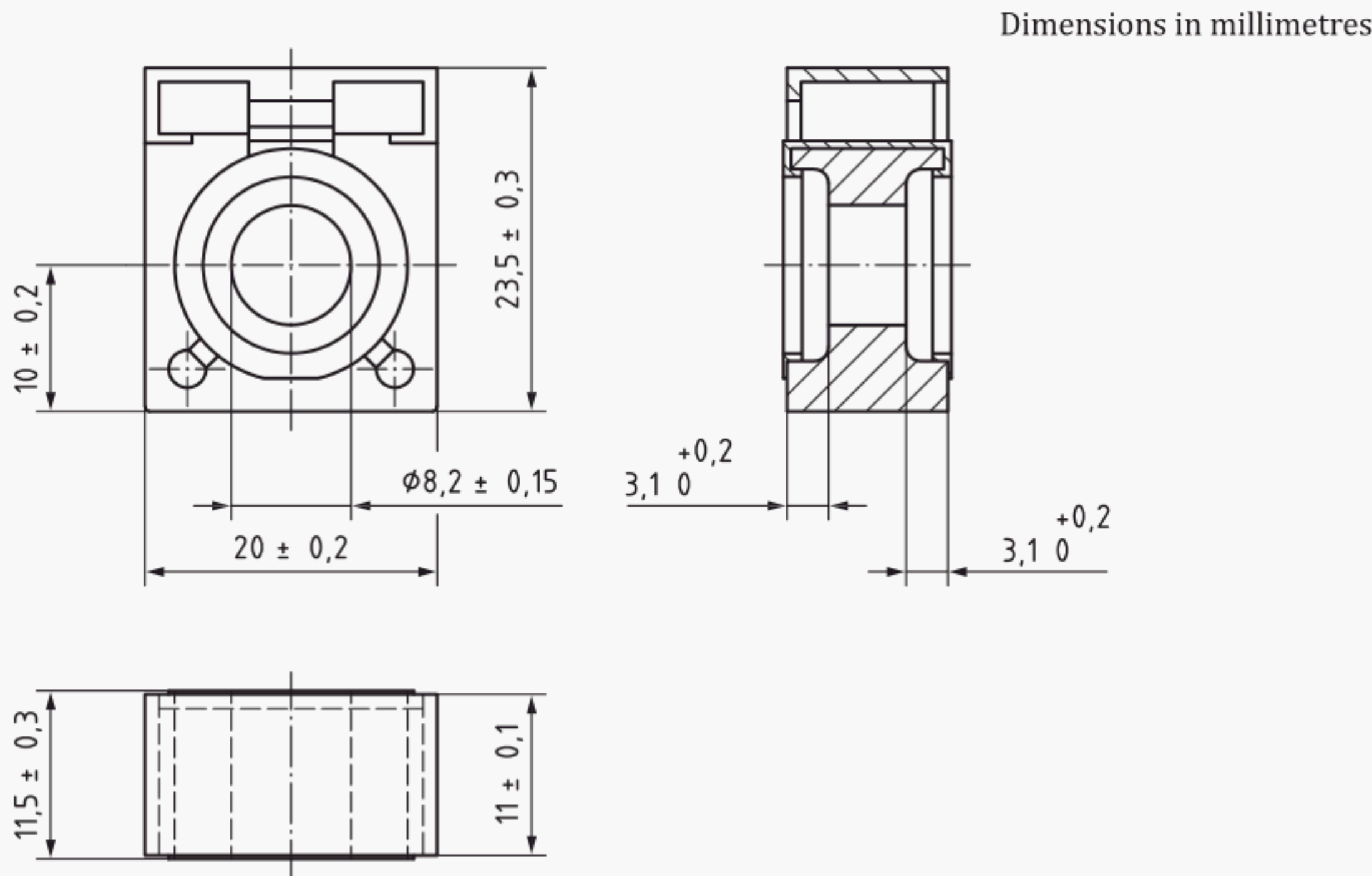
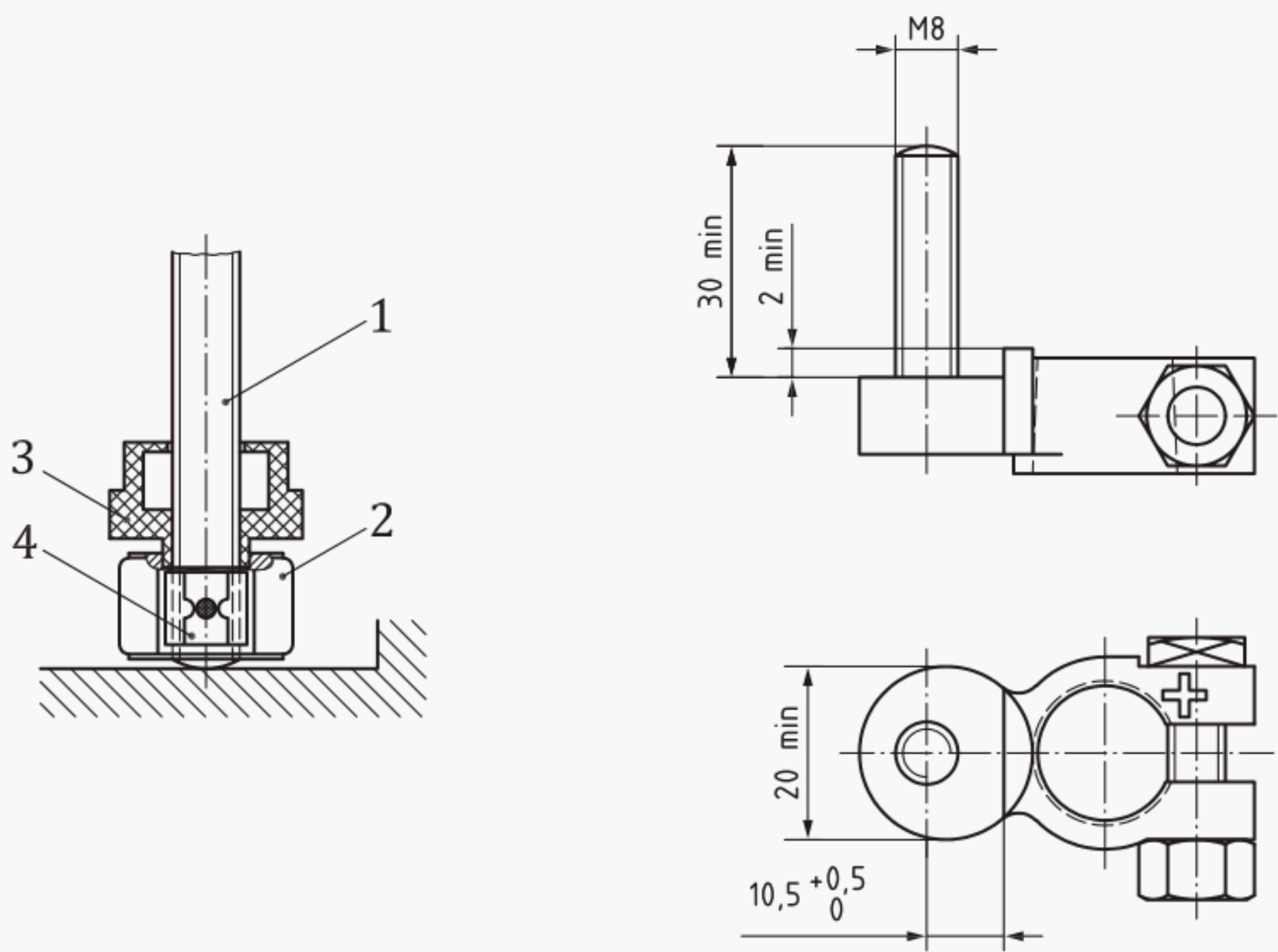


Figure 2 — Single-bolt fuse-link

6.2 Mounting example



- Key**
- 1, 2 measuring points for voltage drop
  - 3 insulated nut
  - 4 bolt

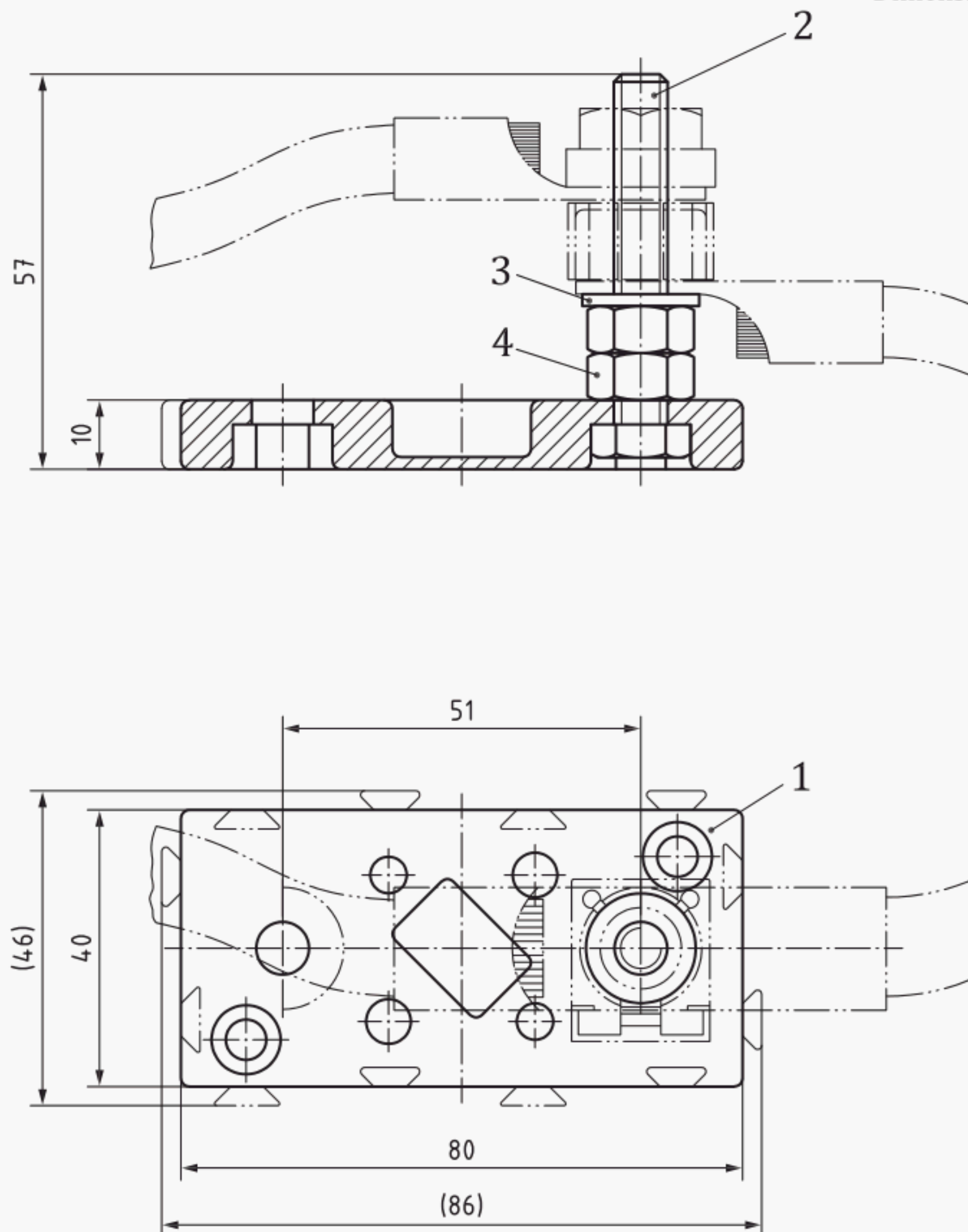
Figure 3 — Mounting example

7 Test fixture

Table 6 — Parts list and material specifications; single-bolt fuse-link

Reference No. in <a href="#">Figure 4</a>	Description	Dimensions see figure	Material specifications, finish and coating	Quantity
1	Test fixture insulating body	2	Thermoset plastic	1
2	Bolt: ISO 4017-M8x50-8.8		Steel, gal. Zn	1
3	Washer: ISO 7089-5-200 HV		Steel, gal. Zn	1
4	Nut: ISO 4032-M8-8		Steel, gal. Zn	2

Dimensions in millimetres



**Key**

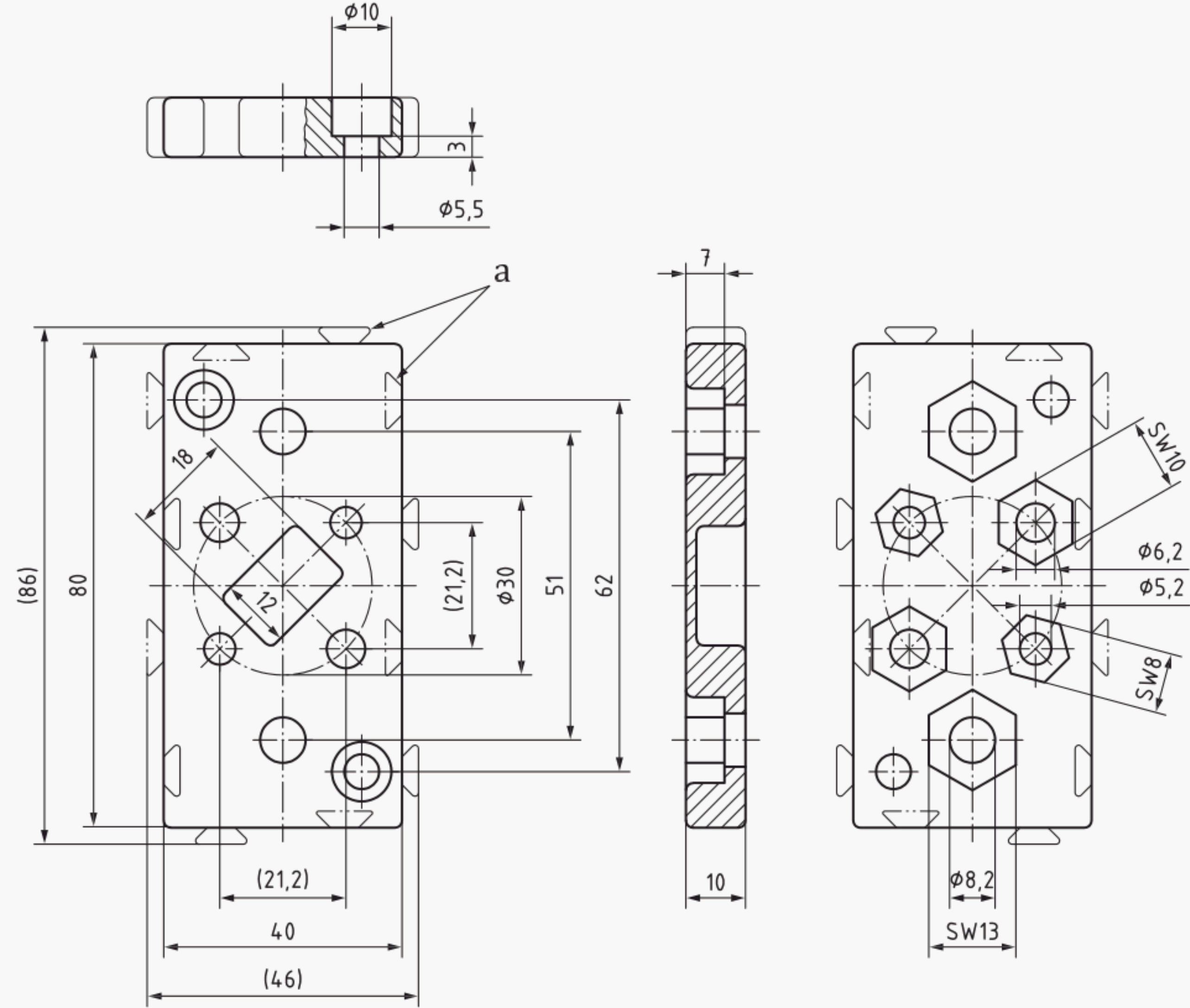
1, 2, 3, 4 see [Table 6](#)

NOTE Tolerances [ISO 2768-1](#) and -2.

**Figure 4 — Test fixture Single-bolt fuse-link**



Dimensions in millimetres



**Key**  
SW hexagon across flats  
a Optionally dove tailing.  
All corners, edges shall be rounded R1.

NOTE Tolerances [ISO 2768-1](#) and [-2](#).

Figure 5 — Test fixture insulating body

## Bibliography

- [1] [ISO 1817](#), *Rubber, vulcanized or thermoplastic — Determination of the effect of liquids*
- [2] [ISO 8820-2](#), *Road vehicles — Fuse-links — Part 2: User guidelines*
- [3] [IEC 60809](#), *Lamps for road vehicles — Dimensional, electrical and luminous requirements*



# British Standards Institution (BSI)

BSI is the national body responsible for preparing British Standards and other standards-related publications, information and services.

BSI is incorporated by Royal Charter. British Standards and other standardization products are published by BSI Standards Limited.

## About us

We bring together business, industry, government, consumers, innovators and others to shape their combined experience and expertise into standards-based solutions.

The knowledge embodied in our standards has been carefully assembled in a dependable format and refined through our open consultation process. Organizations of all sizes and across all sectors choose standards to help them achieve their goals.

## Information on standards

We can provide you with the knowledge that your organization needs to succeed. Find out more about British Standards by visiting our website at [bsigroup.com/standards](https://bsigroup.com/standards) or contacting our Customer Services team or Knowledge Centre.

## Buying standards

You can buy and download PDF versions of BSI publications, including British and adopted European and international standards, through our website at [bsigroup.com/shop](https://bsigroup.com/shop), where hard copies can also be purchased.

If you need international and foreign standards from other Standards Development Organizations, hard copies can be ordered from our Customer Services team.

## Copyright in BSI publications

All the content in BSI publications, including British Standards, is the property of and copyrighted by BSI or some person or entity that owns copyright in the information used (such as the international standardization bodies) and has formally licensed such information to BSI for commercial publication and use.

Save for the provisions below, you may not transfer, share or disseminate any portion of the standard to any other person. You may not adapt, distribute, commercially exploit, or publicly display the standard or any portion thereof in any manner whatsoever without BSI's prior written consent.

## Storing and using standards

Standards purchased in soft copy format:

- A British Standard purchased in soft copy format is licensed to a sole named user for personal or internal company use only.
- The standard may be stored on more than 1 device provided that it is accessible by the sole named user only and that only 1 copy is accessed at any one time.
- A single paper copy may be printed for personal or internal company use only.
- Standards purchased in hard copy format:
- A British Standard purchased in hard copy format is for personal or internal company use only.
- It may not be further reproduced – in any format – to create an additional copy. This includes scanning of the document.

If you need more than 1 copy of the document, or if you wish to share the document on an internal network, you can save money by choosing a subscription product (see 'Subscriptions').

## Reproducing extracts

For permission to reproduce content from BSI publications contact the BSI Copyright & Licensing team.

## Subscriptions

Our range of subscription services are designed to make using standards easier for you. For further information on our subscription products go to [bsigroup.com/subscriptions](https://bsigroup.com/subscriptions).

With **British Standards Online (BSOL)** you'll have instant access to over 55,000 British and adopted European and international standards from your desktop. It's available 24/7 and is refreshed daily so you'll always be up to date.

You can keep in touch with standards developments and receive substantial discounts on the purchase price of standards, both in single copy and subscription format, by becoming a **BSI Subscribing Member**.

**PLUS** is an updating service exclusive to BSI Subscribing Members. You will automatically receive the latest hard copy of your standards when they're revised or replaced.

To find out more about becoming a BSI Subscribing Member and the benefits of membership, please visit [bsigroup.com/shop](https://bsigroup.com/shop).

With a **Multi-User Network Licence (MUNL)** you are able to host standards publications on your intranet. Licences can cover as few or as many users as you wish. With updates supplied as soon as they're available, you can be sure your documentation is current. For further information, email [subscriptions@bsigroup.com](mailto:subscriptions@bsigroup.com).

## Revisions

Our British Standards and other publications are updated by amendment or revision.

We continually improve the quality of our products and services to benefit your business. If you find an inaccuracy or ambiguity within a British Standard or other BSI publication please inform the Knowledge Centre.

## Useful Contacts

### Customer Services

**Tel:** +44 345 086 9001

**Email (orders):** [orders@bsigroup.com](mailto:orders@bsigroup.com)

**Email (enquiries):** [cservices@bsigroup.com](mailto:cservices@bsigroup.com)

### Subscriptions

**Tel:** +44 345 086 9001

**Email:** [subscriptions@bsigroup.com](mailto:subscriptions@bsigroup.com)

### Knowledge Centre

**Tel:** +44 20 8996 7004

**Email:** [knowledgecentre@bsigroup.com](mailto:knowledgecentre@bsigroup.com)

### Copyright & Licensing

**Tel:** +44 20 8996 7070

**Email:** [copyright@bsigroup.com](mailto:copyright@bsigroup.com)

## BSI Group Headquarters

389 Chiswick High Road London W4 4AL UK